

# Histopathological Laboratory Staining



**Quality excellence is at the heart of RCI Labscan strategy.**



**Reliability based on efficient and standardized processes.**



**Consistent quality to ensure reliable analyses.**

**RCI Labscan**  
RCI Labscan Limited

# Histopathological Laboratory Staining

## Routine staining Haematoxylin and eosin (H&E) stain

### Product Name

*PATH.1-EXTRA (Modified, Haematoxylin solution Progressive stain) Mercury-Free*

### Product Code

*MS1455*

RCI Labscan's Haematoxylin is ready to use generates a strong blue-purple color for Nucleus (Dark blue)

### Purposes

To be used as a nucleus staining in pathology laboratory for the medical diagnostic purpose by observing the changes in the nucleus of the specimen submitted for pathological examination.

### Specification

- A ready-to-use staining used for nucleus staining in pathology laboratory for the medical diagnostic purpose
- Nucleus will be stained dark blue on a clear and constant basis (progressive stain)
- Washing any excess staining by 1% acid alcohol after nucleus staining is not required
- Easy-to-use for both manual staining and slide Stainer for the Haematoxylin and Eosin stain (H & E stain)



### Product Name

*PATH.2-EXTRA (Eosin solution, working) Mercury-Free*

### Product Code

*MS1456*

RCI Labscan's Eosin solution is aqueous eosin stain as **ready-to-use** solution for Hematoxylin and Eosin staining (H&E stain). For PATH.1 counterstain. Cytoplasmic components and intercellular substances will be stained by Eosin solution (Pink to Red). Precipitate free. For General Histopathological Laboratory

### Purposes

To be used as a cytoplasm staining in pathology laboratory for the medical diagnostic purpose by observing the changes in the cytoplasm of the specimen submitted for pathological examination.

### Specification

- A ready-to-use staining used for cytoplasm staining in pathology laboratory for the medical diagnostic purpose.
- Cytoplasm will be stained from pink to red depending on the types of tissues and the red blood cell will be stained orange-red, etc.
- Will be used to coat the stained nucleus (counterstain or background stain)
- Easy-to-use for both manual staining and slide Stainer for the Haematoxylin and Eosin stain (H & E stain)

# H&E Stain Manual Method

## Paraffin section: Cut 3 micron

Step	Reagent	Time (min:sec)
1	Xylene	5 min
2	Xylene	4 min
3	Ethanol 100%	1 min
4	Ethanol 100%	1 min
5	Ethanol 95%	1 min
6	Ethanol 95%	1 min
7	Wash well in running tap water	2 min
8	Haematoxylin PATH.1-EXTRA stain *** (see note)	5 min*
9	Wash well in running tap water	5-10 min
10	Ethanol 95%	0:30 min (20-30 Dip)
11	PATH.2-EXTRA *** (see note)	3 min*
12	Ethanol 95%	0:05 min (5 Dip)
13	Ethanol 95%	0:05 min (5 Dip)
14	Ethanol 100%	0:30 min
15	Ethanol 100%	1 min
16	Xylene	1 min
17	Xylene	2 min
18	Xylene	2-5 min
19	Mount	-

### \*NOTE

Step 8 and 11, Adjust staining time (Haematoxylin, Eosin) depending on the staining intensity (as a Doctor like/Prefer)

## RESULT

Nucleus	-Blue / Black
Cytoplasm	-Pink to Red
Red Blood Cells	-Orange / Red

## Auxiliary reagents

Product code	Product Name
AR1409	Ethanol 95%,AR
AR1380	Ethanol,AR
AR1213	Xylene,AR

## Storage temperature

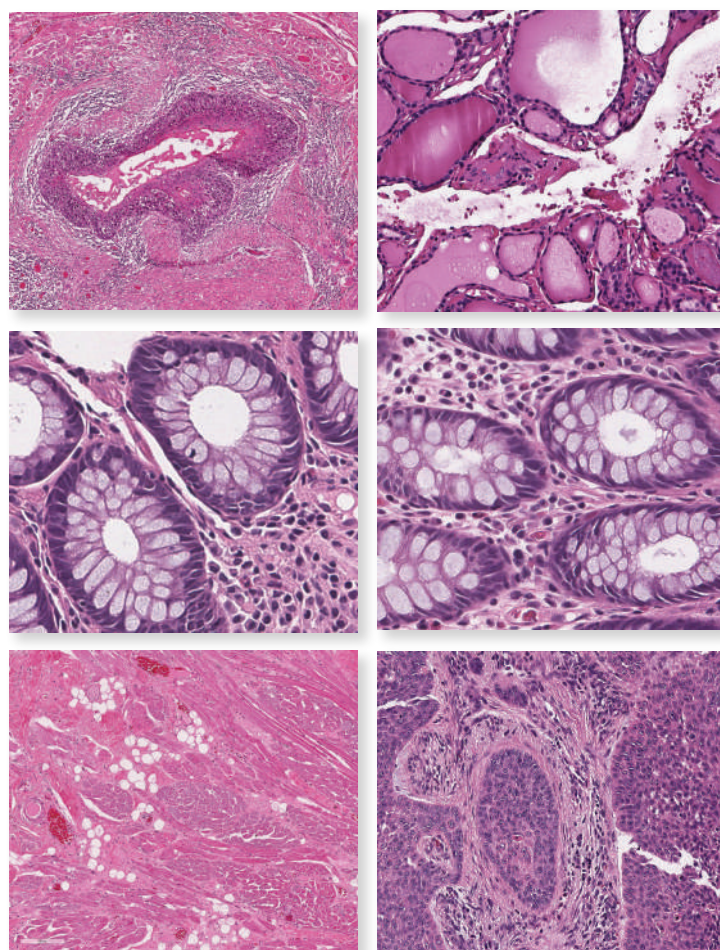
Room temperature

## Shelf-life

2 years

## Packing

450 ML, 1L, 2.5L



## For more information please contact:

### Office

24 Rama 1 Road,  
Rongmuang,  
Pathumwan, Bangkok  
10330 Thailand

+66 2613 7911-4

+66 2613 7600-5

+66 2613 7600-5

sales@rcilabscan.com

www.rcilabscan.com



# Histopathological Laboratory Staining

## Papanicolaou Staining Procedures (PAP Stain) for GYN and NON-GYN specimen

### Product Name

*PAP.1 – EXTRA, Modified, Haematoxylin Solution Progressive Stain ( PAPANICOLAU Haematoxylin Stain Solution) for Cytology PAP Smears, Mercury-Free*

### Product Code

*MS1457*

### Purposes

To be used as a nucleus staining in cytology laboratory for the medical diagnostic purpose by observing the changes in the nucleus of the specimen submitted for cytological examination.

### Specification

- A ready-to-use staining used for nucleus staining in cytology laboratory for the medical diagnostic purpose.
- Nucleus will be stained dark blue on a clear and constant basis (progressive stain)
- Washing any excess staining by 1% acid alcohol after nucleus staining is not required
- Mercury-free staining enhances the operator's safety
- Easy-to-use for both manual staining and slide Stainer



### Product Name

*PAP.2 – EXTRA, Modified, Orange G (OG-6) Solution (PAPANICOLAU OG-6 Stain Solution) for Cytology PAP Smears, Mercury-Free*

### Product Code

*MS1458*

### Purposes

To be used as a cytoplasm staining in cytology laboratory for the medical diagnostic purpose by observing the changes in the cytoplasm of the specimen submitted for cytological examination.

### Specification

- A ready-to-use staining used for cytoplasm staining in cytology laboratory for the medical diagnostic purpose.
- Cytoplasm with keratin will be stained yellow or orange.
- Easy-to-use for both manual staining and slide Stainer.

### Product Name

*PAP.3 – EXTRA, Modified, Eosin Azure (EA-50) Solution (PAPANICOLAU EA50 Stain Solution for Cytology PAP Smears), Mercury-Free*

### Product Code

*MS1459*

### Purposes

To be used as a cytoplasm staining in cytology laboratory for the medical diagnostic purpose by observing the changes in the cytoplasm of the specimen submitted for cytological examination.

# Papanicolaou Staining Procedures (PAP Stain) for GYN and NON-GYN specimen Manual Method

## Specification

- A ready-to-use staining used for cytoplasm staining in cytology laboratory for the medical diagnostic purpose.
- Cytoplasm with keratin will be stained by different colors according to the acidity and alkalinity structure.
- The cell with acid cytoplasm structure will be stained pink-red.
- The cell with alkaline cytoplasm structure will be stained green, light blue (bluish tinge), or green-blue.
- The red blood cell will be stained red or orange-red.
- Easy-to-use for both manual staining and slide Stainer.

## Fixation: Fix smear according to standard procedure (95% Alcohol)

Step	Reagent	Time (min:sec)
1	Fix smear in fresh 95% Ethanol	30 min
2	Wash well in Running tap water	5 min
3	Stain in HAEMATOXYLIN (PAP.1)/ Progressive stain *** (see note)	1-3 min
4	Wash well in Running tap water	5-10 min
5	95% Ethanol	0:30 min (20-30 Dip)
6	Stain in OG-6 (PAP.2) *** (see note)	2 min
7	95% Ethanol	0:05-0:10 min (5-10 Dip)
8	95% Ethanol	0:05-0:10 min (5-10 Dip)
9	Stain in EA50 (PAP.3) *** (see note)	3 min
10	95% Ethanol	0:05-0:10 (5-10 Dip)
11	95% Ethanol	0:05-0:10 (5-10 Dip)
12	100% Ethanol	1 min
13	100% Ethanol	1 min
14	Xylene	1 min
15	Xylene	2 min
16	Xylene	5 min
17	Mount	-

## \*NOTE

Step 3,6,9 Adjust staining time (Hematoxylin,OG-6, EA50) depending on the staining intensity (According to Doctor/Cytologist prefers).

## RESULT

Nucleus	-Blue
Acidophilic cells, Keratin	- Pink to Orange
Basophilic cells	- Green to Blue green
Red blood cells	- Red to Orange

## Auxiliary reagents

Product code	Product Name
AR1409	Ethanol 95%,AR
AR1380	Ethanol,AR
AR1213	Xylene,AR

## Storage temperature

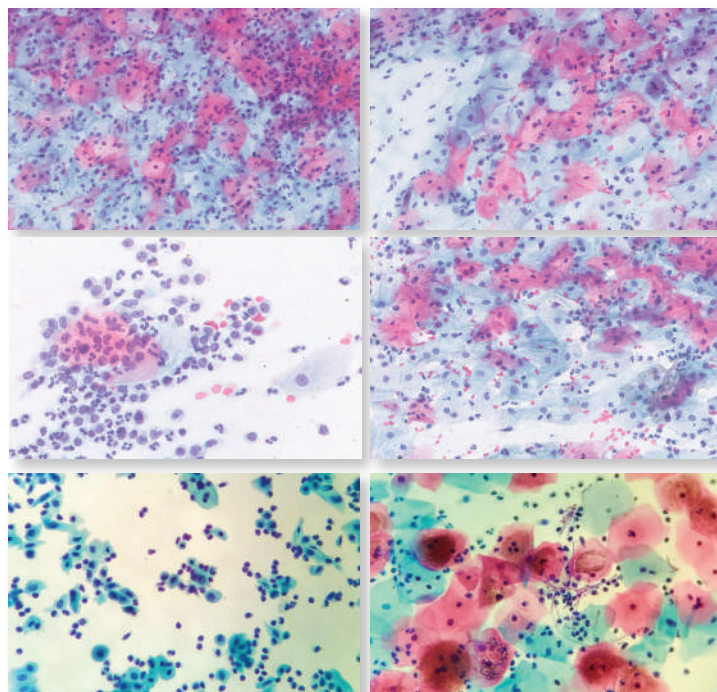
Room temperature

## Shelf-life

2 years

## Packing

450 ML, 1L, 2.5L



## For more information please contact:

### Office

24 Rama 1 Road,  
Rongmuang,  
Pathumwan, Bangkok  
10330 Thailand

+66 2613 7911-4

+66 2613 7600-5

+66 2613 7600-5

sales@rcilabscan.com

www.rcilabscan.com

**RCI Labscan**

RCI Labscan Limited

## Office

24 Rama 1 Road,  
Rongmuang,  
Pathumwan, Bangkok  
10330 Thailand

+66 2613 7911-4

+66 2613 7600-5

+66 2613 7600-5

[sales@rcilabscan.com](mailto:sales@rcilabscan.com)

[www.rcilabscan.com](http://www.rcilabscan.com)

