

LVI-GC Solvents



Quality excellence is at the heart of RCI Labscan strategy.



Reliability based on efficient and standardized processes.



Consistent quality to ensure reliable analyses.

RCI Labscan
RCI Labscan Limited

LVI-GC solvents by RCI Labscan

In order to accommodate the needs of our customers, RCI Labscan is proud to announce the launch of LVI-GC grade solvents :

- Suitable for ultimate organic trace analysis.
- Checked for ppb levels of PCDDs/PCDFs, PCBs, PAHs.
- Perfect match for LVI-Gas Chromatography applications.
- Higher accuracy.
- Perfect control of impurities.

Consistent quality & Safe packaging

- The high & consistent quality of RCI Labscan solvents are ensured by the implementation of stringent manufacturing quality control measures.
- To ensure reliable analyses, we strictly test each batch before all shipments.
- Our LVI-GC solvents are packed in 0.5L, 1L, 2.5L and 4L amber glass bottles.
- Our range of packaging is designed for safety, convenient handling and efficient storage.
- UN-approved packaging



ISO 9001



ISO 14001



ISO 45001



Halal



UN Packaging

PRODUCT INDEX

Code	Product Name	
LV1003	Acetone, LVI-GC	3
LV1005	Acetonitrile, LVI-GC	3
LV1027E	Chloroform, LVI-GC	4
LV1033	Cyclohexane, LVI-GC	4
LV1040A	Dichloromethane, LVI-GC	5
LV1046E	Diethyl Ether, LVI-GC	5
LV1070	Ethyl Acetate, LVI-GC	6
LV1078	n-Heptane 95%, LVI-GC	6
LV1080	n-Heptane 99%, LVI-GC	7
LV1083	n-Hexane 95%, LVI-GC	7
LV1085	n-Hexane 99%, LVI-GC	8
LV1115	Methanol, LVI-GC	8
LV1125	Methyl-t-Butyl Ether, LVI-GC	9
LV1146	n-Pentane 99%, LVI-GC	9
LV1147	Petroleum Ether 40 - 60, LVI-GC	10
LV1148	Petroleum Ether 60 - 80, LVI-GC	10
LV1162	Propan-2-ol, LVI-GC	11
LV1347	Toluene, LVI-GC	11
LV1206	2,2,4-Trimethylpentane, LVI-GC	12
LV1210	Water, LVI-GC	12

Acetone, LVI-GC

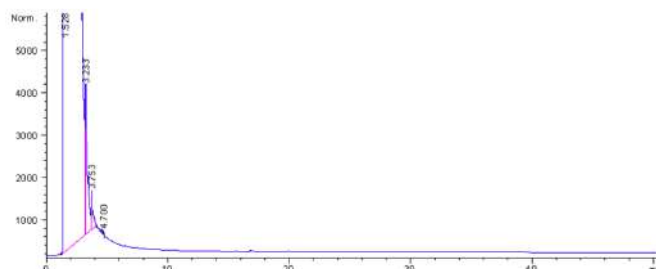
LV1003

CH₃COCH₃ FW. 58.08
CAS-No. 67-64-1
Code LV1003

Density 1 L = 0.790 Kg.
Melting Point -95.4 °C
Boiling Point 56.2 °C

Specifications

Assay (by GC.)	99.9%	min.
Identity (IR)	Passes test	
Color (APHA)	10	max.
Water (by Coulometry)	0.2%	max.
Acidity (mEq./g.)	0.0005	max.
Alkalinity (mEq./g.)	0.0002	max.
Residue on Evaporation	0.0003%	max
Substances reducing permanganate	Passes test	
ECD (as lindane standard) Single impurity peak	10	pg/ml max.
Any hydrocarbon between C10 to C40	0.1	mg/L max.



Cat No.	Package	Size
LV1003-G0.5L	Amber Glass	0.5 Litre
LV1003-G1L	Amber Glass	1 Litre

Cat No.	Package	Size
LV1003-G2.5L	Amber Glass	2.5 Litre
LV1003-G4L	Amber Glass	4 Litre

Acetonitrile, LVI-GC

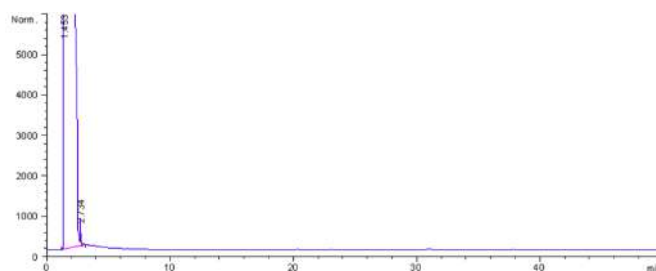
LV1005

CH₃CN FW. 41.05
CAS-No. 75-05-8
Code LV1005

Density 1 L = 0.786 Kg.
Melting Point -45.7 °C
Boiling Point 81.6 °C

Specifications

Assay (by GC.)	99.9%	min.
Identity (IR)	Passes test	
Color (APHA)	10	max.
Water (by Coulometry)	0.02%	max.
Acidity (mEq./g.)	0.0005	max.
Alkalinity (mEq./g.)	0.0002	max.
Residue on Evaporation	0.0003%	max.
ECD (as lindane standard) Single impurity peak	10	pg/ml max
Any hydrocarbon between C10 to C40	0.05	mg/L max.



Cat No.	Package	Size
LV1005-G0.5L	Amber Glass	0.5 Litre
LV1005-G1L	Amber Glass	1 Litre

Cat No.	Package	Size
LV1005-G2.5L	Amber Glass	2.5 Litre
LV1005-G4L	Amber Glass	4 Litre

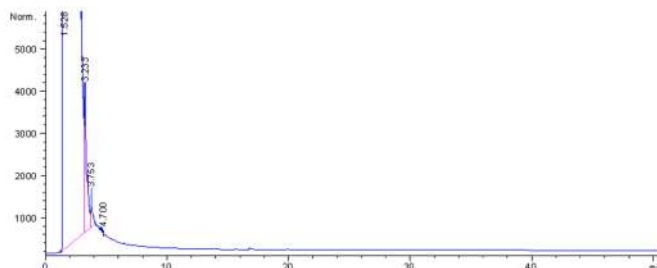
Chloroform, LVI-GC

LV1027E

CHCl₃ FW. 119.38
CAS-No. 67-66-3
Code LV1027E

Density 1 L = 1.479 Kg.
Melting Point - 63 °C
Boiling Point 61 °C

Assay (by GC.)	99.8%	min.
Identity (IR)	Passes test	
Color (APHA)	10	max.
Water (by Coulometry)	0.01%	max.
Acidity (mEq./g.)	0.0005	max.
Residue on Evaporation	0.0003%	max.
Free Chlorine (Cl)	0.0005%	max.
Substances darkened by sulfuric acid	Passes test	
ECD (as lindane standard) Single impurity peak	10	pg/ml max
Any hydrocarbon between C10 to C40	0.1	mg/L max



Stabilized with about 1% ethanol.

Cat No.	Package	Size
LV1027E-G0.5L	Amber Glass	0.5 Litre
LV1027E-G1L	Amber Glass	1 Litre

Cat No.	Package	Size
LV1027E-G2.5L	Amber Glass	2.5 Litre
LV1027E-G4L	Amber Glass	4 Litre

Cyclohexane, LVI-GC

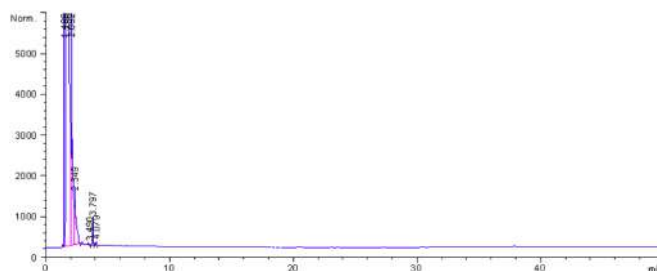
LV1033

C₆H₁₂ FW. 84.16
CAS-No. 110-82-7
Code LV1033

Density 1 L = 0.779 Kg.
Melting Point 6 °C
Boiling Point 81 °C

Specifications

Assay (by GC.)	99.8%	min.
Identity (IR)	Passes test	
Color (APHA)	10	max.
Water (by Coulometry)	0.01%	max.
Acidity (mEq./g.)	0.0005	max.
Residue on Evaporation	0.0003%	max.
Substances darkened by sulfuric acid	Passes test	
ECD (as lindane standard) Single impurity peak	10	pg/ml max
Any hydrocarbon between C10 to C40	0.05	mg/L max.



Cat No.	Package	Size
LV1033-G0.5L	Amber Glass	0.5 Litre
LV1033-G1L	Amber Glass	1 Litre

Cat No.	Package	Size
LV1033-G2.5L	Amber Glass	2.5 Litre
LV1033-G4L	Amber Glass	4 Litre

Dichloromethane, LVI-GC

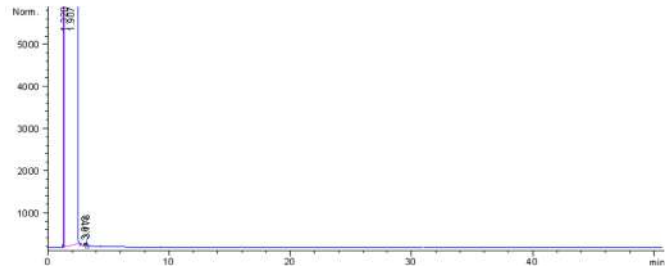
LV1040A

CH₂Cl₂ FW. 84.93
CAS-No. 75-09-2
Code LV1040A

Density 1 L = 1.330 Kg.
Melting Point - 95 °C
Boiling Point 40 °C

Specifications

Assay (by GC.)	99.9%	min.
Identity (IR)	Passes test	
Color (APHA)	10	max.
Water (by Coulometry)	0.01	max.
Acidity (mEq./g.)	0.0003	max.
Alkalinity (mEq./g)	0.0002	max.
Residue on Evaporation	0.0003%	max.
ECD (as lindane standard) Single impurity peak	10	pg/ml max
Any hydrocarbon between C10 to C40	0.1	mg/L max.



Stabilized with about 50 ppm amylene.

Cat No.	Package	Size
LV1040A-G0.5L	Amber Glass	0.5 Litre
LV1040A-G1L	Amber Glass	1 Litre

Cat No.	Package	Size
LV1040A-G2.5L	Amber Glass	2.5 Litre
LV1040A-G4L	Amber Glass	4 Litre

Diethyl Ether, LVI-GC

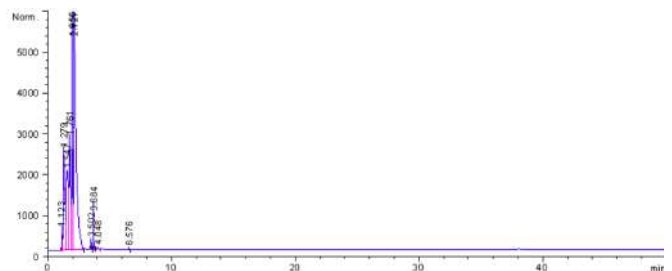
LV1046E

(C₂H₅)₂O FW. 74.12
CAS-No. 60-29-7
Code LV1046E

Density 1 L = 0.710 Kg.
Melting Point - 116.3 °C
Boiling Point 34.6 °C

Specifications

Assay (by GC.)	99.5%	min.
Identity (IR)	Passes test	
Color (APHA)	10	max.
Water (by Coulometry)	0.01 %	max.
Acidity (mEq./g.)	0.0005	max.
Residue on Evaporation	0.0003%	max.
Peroxide (as H ₂ O ₂)	5	ppm max
ECD (as lindane standard) Single impurity peak	10	pg/ml max
Any hydrocarbon between C10 to C40	0.1	mg/L max.



Stabilized with about 1% ethanol.

Cat No.	Package	Size
LV1046E-G0.5L	Amber Glass	0.5 Litre
LV1046E-G1L	Amber Glass	1 Litre

Cat No.	Package	Size
LV1046E-G2.5L	Amber Glass	2.5 Litre
LV1046E-G4L	Amber Glass	4 Litre

Ethyl Acetate, LVI-GC

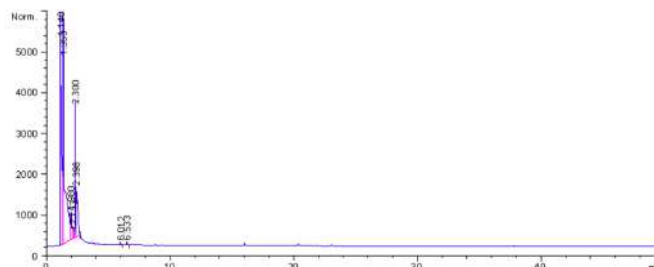
LV1070

CH₃COOC₂H₅ FW. 88.11
CAS-No. 141-78-6
Code LV1070

Density 1 L = 0.900 Kg.
Melting Point - 83 °C
Boiling Point 77 °C

Specifications

Assay (by GC.)	99.9%	min.
Identity (IR)	Passes test	
Color (APHA)	10	max.
Water (by Coulometry)	0.02%	max.
Acidity (mEq./g.)	0.0005	max.
Residue on Evaporation	0.0003%	max.
Substances darkened by sulfuric acid	Passes test	
ECD (as lindane standard) Single impurity peak	10	pg/ml max
Any hydrocarbon between C10 to C40	0.05	mg/L max.



Cat No.	Package	Size
LV1070-G0.5L	Amber Glass	0.5 Litre
LV1070-G1L	Amber Glass	1 Litre

Cat No.	Package	Size
LV1070-G2.5L	Amber Glass	2.5 Litre
LV1070-G4L	Amber Glass	4 Litre

n-Heptane 95%, LVI-GC

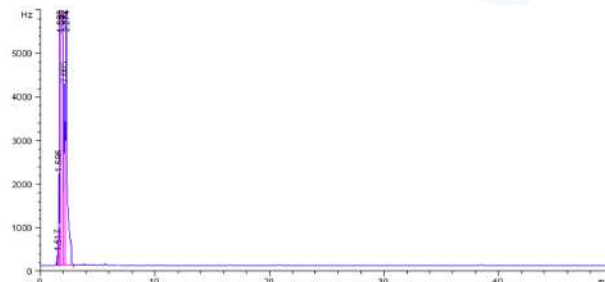
LV1078

CH₃(CH₂)₅CH₃ FW. 100.21
CAS-No. 142-82-5
Code LV1078

Density 1 L = 0.680 Kg.
Melting Point - 90.5 °C
Boiling Point 97-98 °C

Specifications

Assay (by GC.)	95.0%	min.
Identity (IR)	Passes test	
Color (APHA)	10	max.
Water (by Coulometry)	0.01%	max.
Acidity (mEq./g.)	0.0005	max.
Residue on Evaporation	0.0003%	max.
Substances darkened by sulfuric acid	Passes test	
ECD (as lindane standard) Single impurity peak	10	pg/ml max
Any hydrocarbon between C10 to C40	0.1	mg/L max.



Cat No.	Package	Size
LV1078-G0.5L	Amber Glass	0.5 Litre
LV1078-G1L	Amber Glass	1 Litre

Cat No.	Package	Size
LV1078-G2.5L	Amber Glass	2.5 Litre
LV1078-G4L	Amber Glass	4 Litre

n-Heptane 99%, LVI-GC

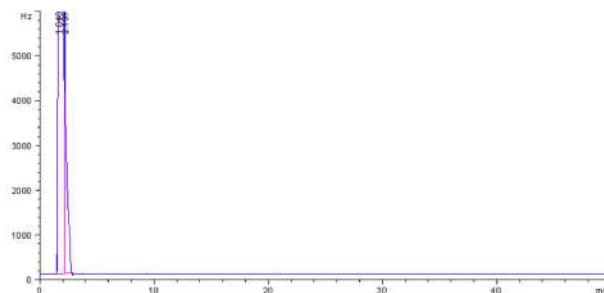
LV1080

CH₃(CH₂)₅CH₃ FW. 100.21
CAS-No. 142-82-5
Code LV1080

Density 1 L = 0.680 Kg.
Melting Point - 90.5 °C
Boiling Point 97-98 °C

Specifications

Assay (by GC.)	99.0%	min.
Identity (IR)	Passes test	
Color (APHA)	10	max.
Water (by Coulometry)	0.01%	max.
Acidity (mEq./g.)	0.0005	max.
Residue on Evaporation	0.0003%	max.
Substances darkened by sulfuric acid	Passes test	
ECD (as lindane standard) Single impurity peak	10	pg/ml max
Any hydrocarbon between C10 to C40	0.1	mg/L max.



Cat No.	Package	Size
LV1080-G0.5L	Amber Glass	0.5 Litre
LV1080-G1L	Amber Glass	1 Litre

Cat No.	Package	Size
LV1080-G2.5L	Amber Glass	2.5 Litre
LV1080-G4L	Amber Glass	4 Litre

n-Hexane 95%, LVI-GC

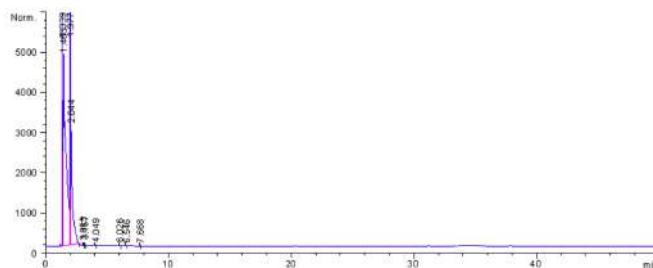
LV1083

CH₃(CH₂)₄CH₃ FW. 86.18
CAS-No. 110-54-3
Code LV1083

Density 1 L = 0.660 Kg.
Melting Point - 94.3 °C
Boiling Point 69 °C

Specifications

Assay (n-Hexane)	95.0%	min.
Assay (Total C ₆ Isomers)	99.5%	min.
Identity (IR)	Passes test	
Color (APHA)	10	max.
Water (by Coulometry)	0.01%	max.
Acidity (mEq./g.)	0.0005	max.
Residue on Evaporation	0.0003%	max.
Substances darkened by sulfuric acid	Passes test	
ECD (as lindane standard) Single impurity peak	10	pg/ml max
Any hydrocarbon between C10 to C40	0.1	mg/L max.



Total isomers : n-Hexane , Methylpentane , Methylcyclopentane and Dimethylbutane.

Cat No.	Package	Size
LV1083-G0.5L	Amber Glass	0.5 Litre
LV1083-G1L	Amber Glass	1 Litre

Cat No.	Package	Size
LV1083-G2.5L	Amber Glass	2.5 Litre
LV1083-G4L	Amber Glass	4 Litre

n-Hexane 99%, LVI-GC

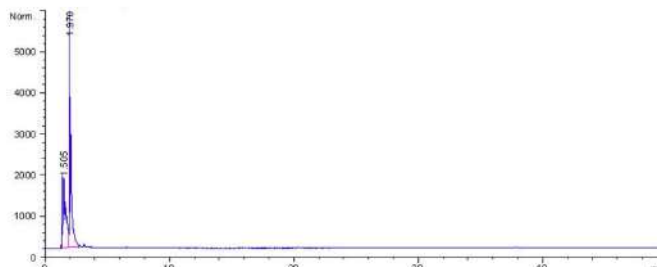
LV1085

CH₃(CH₂)₄CH₃ FW. 86.18
CAS-No. 110-54-3
Code LV1085

Density 1 L = 0.660 Kg.
Melting Point - 94.3 °C
Boiling Point 69 °C

Specifications

Assay (by GC.)	99.0%	min.
Assay (Total C ₆ Isomers)	99.8%	min.
Identity (IR)	Passes test	max.
Color (APHA)	10	max.
Water (by Coulometry)	0.01%	max.
Acidity (mEq./g.)	0.0005	max.
Residue on Evaporation	0.0003%	
Substances darkened by sulfuric acid	Passes test	pg/ml max
ECD (as lindane standard) Single impurity peak	10	mg/L max.
Any hydrocarbon between C10 to C40	0.05	mg/L max.



Total isomers : n-Hexane , Methylpentane , Methylcyclopentane and Dimethylbutane.

Cat No.	Package	Size
LV1085-G0.5L	Amber Glass	0.5 Litre
LV1085-G1L	Amber Glass	1 Litre

Cat No.	Package	Size
LV1085-G2.5L	Amber Glass	2.5 Litre
LV1085-G4L	Amber Glass	4 Litre

Methanol, LVI-GC

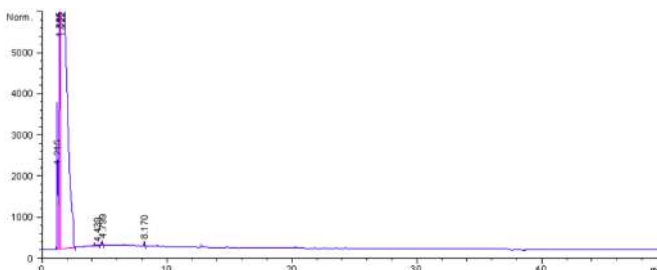
LV1115

CH₃OH FW. 32.04
CAS-No. 67-56-1
Code LV1115

Density 1 L = 0.790 Kg.
Melting Point - 98 °C
Boiling Point 64.5 °C

Specifications

Assay (by GC.)	99.9%	min.
Identity (IR)	Passes test	
Color (APHA)	10	max.
Water (by Coulometry)	0.05%	max.
Acidity (mEq./g.)	0.0005	max.
Alkalinity (mEq./g.)	0.0002	max.
Residue on Evaporation	0.0003%	max.
Acetone (GC.)	0.001%	max.
ECD (as lindane standard) Single impurity peak	10	pg/ml max.
Any hydrocarbon between C10 to C40	0.05	mg/L max.



Cat No.	Package	Size
LV1115 -G0.5L	Amber Glass	0.5 Litre
LV1115 -G1L	Amber Glass	1 Litre

Cat No.	Package	Size
LV1115 -G2.5L	Amber Glass	2.5 Litre
LV1115 -G4L	Amber Glass	4 Litre

Methyl-t-Butyl Ether, LVI-GC

LV1125

CH₃OC(CH₃)₃ FW. 88.15
CAS-No. 1634-04-4
Code LV1125

Density 1 L = 0.740 Kg.
Melting Point - 108.6 °C
Boiling Point 55.3 °C

Specifications

Assay (by GC.)	99.8%	min.
Identity (IR)	Passes test	
Color (APHA)	10	max.
Water (by Coulometry)	0.05%	max.
Acidity (mEq./g.)	0.0005	max.
Residue on Evaporation	0.0003%	max.
Peroxide (as H ₂ O ₂)	1	ppm max.
ECD (as lindane standard) Single impurity peak	10	pg/ml max.
Any hydrocarbon between C10 to C40	0.1	mg/L max.

Cat No.	Package	Size
LV1115 -G0.5L	Amber Glass	0.5 Litre
LV1115 -G1L	Amber Glass	1 Litre

Cat No.	Package	Size
LV1115 -G2.5L	Amber Glass	2.5 Litre
LV1115 -G4L	Amber Glass	4 Litre

n-Pentane 99%, LVI-GC

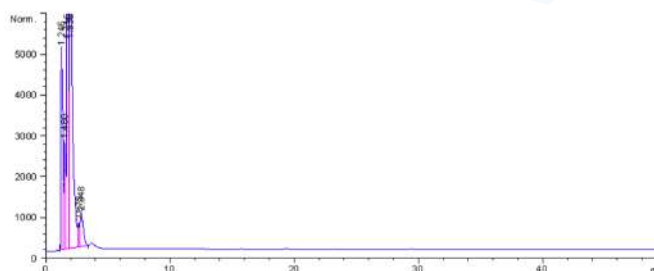
LV1146

CH₃(CH₂)₃CH₃ FW. 72.15
CAS-No. 109-66-0
Code LV1146

Density 1 L = 0.630 Kg.
Melting Point - 129.7 °C
Boiling Point 36.1 °C

Specifications

Assay (by GC.)	99.0%	min.
Identity (IR)	Passes test	
Color (APHA)	10	max.
Water (by Coulometry)	0.01%	max.
Acidity (mEq./g.)	0.0005	max.
Residue on Evaporation	0.0003%	max.
Substances darkened by sulfuric acid	Passes test	
ECD (as lindane standard) Single impurity peak	10	pg/ml max
Any hydrocarbon between C10 to C40	0.1	mg/L max.



Cat No.	Package	Size
LV1146 -G0.5L	Amber Glass	0.5 Litre
LV1146 -G1L	Amber Glass	1 Litre

Cat No.	Package	Size
LV1146 -G2.5L	Amber Glass	2.5 Litre
LV1146 -G4L	Amber Glass	4 Litre

Petroleum Ether 40 - 60, LVI-GC

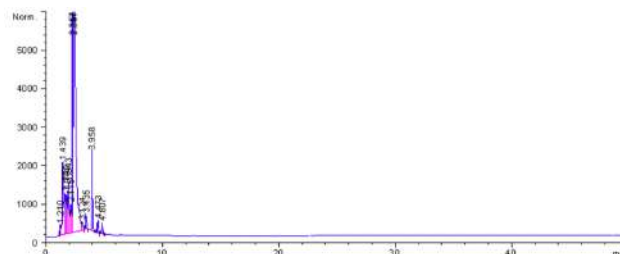
LV1147

CAS-No. 64742-49-0
Code LV1147

Density 1 L = 0.645-0.665 Kg.
Boiling Point 40-60 °C

Specifications

Identity (IR)	Passes test	
Color (APHA)	10	max.
Water (by Coulometry)	0.01%	max.
Acidity (mEq./g.)	0.0005	max
Residue on Evaporation	0.0003%	max.
ECD (as lindane standard) Single impurity peak	10	pg/ml max.
Any hydrocarbon between C10 to C40	0.1	mg/L max.



Cat No.

Package

Size

LV1147-G0.5L	Amber Glass	0.5 Litre
LV1147-G1L	Amber Glass	1 Litre

Cat No.

Package

Size

LV1147-G2.5L	Amber Glass	2.5 Litre
LV1147-G4L	Amber Glass	4 Litre

Petroleum Ether 60 - 80, LVI-GC

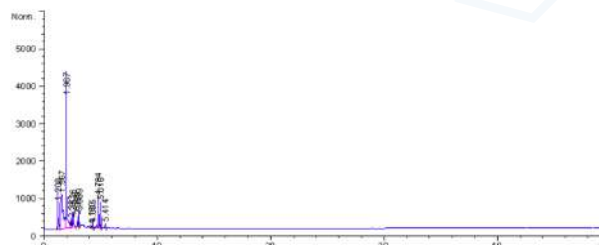
LV1148

CAS-No. 64742-49-0
Code LV1148

Density 1 L = 0.680 Kg.
Boiling Point 60-80 °C

Specifications

Identity (IR)	Passes test	
Color (APHA)	10	max.
Water (by Coulometry)	0.01%	max.
Acidity (mEq./g.)	0.0005	max.
Residue on Evaporation	0.0003%	max.
ECD (as lindane standard) Single impurity peak	10	pg/ml max.
Any hydrocarbon between C10 to C40	0.1	mg/L max.



Cat No.

Package

Size

LV1148 -G0.5L	Amber Glass	0.5 Litre
LV1148 -G1L	Amber Glass	1 Litre

Cat No.

Package

Size

LV1148 -G2.5L	Amber Glass	2.5 Litre
LV1148 -G4L	Amber Glass	4 Litre

Propan-2-ol, LVI-GC

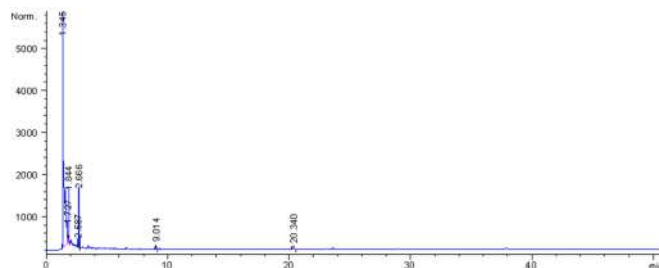
LV1162

(CH₃)₂CHOH FW. 60.10
CAS-No. 67-63-0
Code LV1162

Density 1 L = 0.786 Kg.
Melting Point - 89.5 °C
Boiling Point 82.4 °C

Specifications

Assay (by GC.)	99.9%	min.
Identity (IR)	Passes test	
Color (APHA)	10	max.
Water (by Coulometry)	0.05%	max.
Acidity (mEq./g.)	0.0005	max.
Alkalinity (mEq./g.)	0.0002	max.
Residue on Evaporation	0.0003%	max.
Substances darkened by sulfuric acid	Passes test	
ECD (as lindane standard) Single impurity peak	10	pg/ml max.
Any hydrocarbon between C10 to C40	0.1	mg/L max.



Cat No.	Package	Size
LV1162-G0.5L	Amber Glass	0.5 Litre
LV1162-G1L	Amber Glass	1 Litre

Cat No.	Package	Size
LV1162-G2.5L	Amber Glass	2.5 Litre
LV1162-G4L	Amber Glass	4 Litre

Toluene, LVI-GC

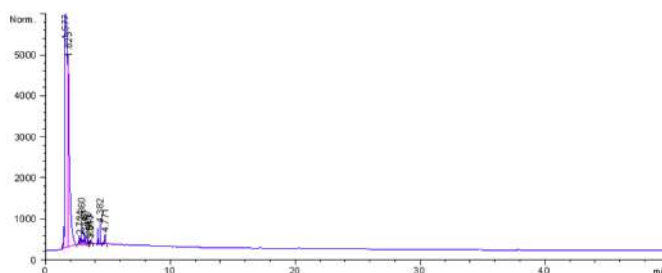
LV1347

C₆H₅CH₃ FW. 92.14
CAS-No. 108-88-3
Code LV1347

Density 1 L = 0.870 Kg.
Melting Point - 95 °C
Boiling Point 110.6 °C

Specifications

Assay (by GC.)	99.8%	min.
Identity (IR)	Passes test	
Appearance	Clear	
Color (APHA)	10	max.
Water (by Coulometry)	0.02%	max.
Acidity (mEq./g.)	0.0002	max.
Alkalinity (mEq./g.)	0.0004	max.
Residue on Evaporation	0.0003%	max.
Substances darkened by sulfuric acid	Passes test	
Sulfur Compounds (S)	0.003%	max.
ECD (as lindane standard) Single impurity peak	10	pg/ml max.
Any hydrocarbon between C10 to C40	0.1	mg/L max.



Cat No.	Package	Size
LV1347-G0.5L	Amber Glass	0.5 Litre
LV1347-G1L	Amber Glass	1 Litre

Cat No.	Package	Size
LV1347-G2.5L	Amber Glass	2.5 Litre
LV1347-G4L	Amber Glass	4 Litre

2,2,4-Trimethylpentane, LVI-GC

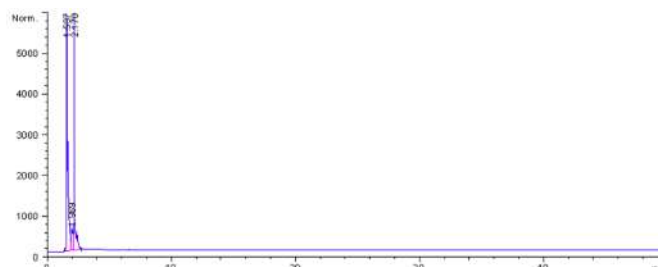
LV1206

(CH₃)₂CHCH₂C(CH₃)₃ FW. 114.23
CAS-No. 540-84-1
Code LV1206

Density 1 L = 0.690 Kg.
Melting Point - 107 °C
Boiling Point 99 °C

Specifications

Assay (by GC.)	99.5%	min.
Identity (IR)	Passes test	
Color (APHA)	10	max.
Water (by Coulometry)	0.02%	max.
Acidity (mEq./g.)	0.0005	max.
Residue on Evaporation	0.0003%	max.
Substances darkened by sulfuric acid	Passes test	
Sulfur Compounds (as S)	0.001%	max.
ECD (as lindane standard) Single impurity peak	10	pg/ml max.
Any hydrocarbon between C10 to C40	0.1	mg/L max.



Cat No.	Package	Size
LV1206-G0.5L	Amber Glass	0.5 Litre
LV1206-G1L	Amber Glass	1 Litre

Cat No.	Package	Size
LV1206-G2.5L	Amber Glass	2.5 Litre
LV1206-G4L	Amber Glass	4 Litre

Water, LVI-GC

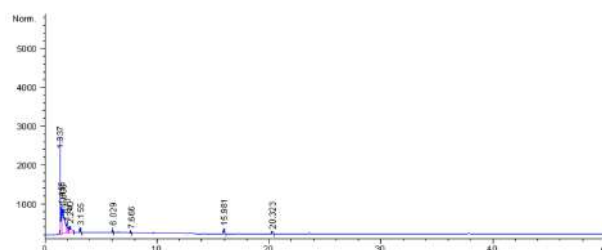
LV1210

H₂O FW. 18.02
CAS-No. 7732-18-5
Code LV1210

Density 1 L = 1.000 Kg.
Melting Point 0 °C
Boiling Point 100 °C

Specifications

Residue on Evaporation	0.0003%	max.
Conductivity (µS/cm)	1	max.
ECD (as lindane standard) Single impurity peak	10	pg/ml max.
Any hydrocarbon between C10 to C40	0.1	mg/L max.



Cat No.	Package	Size
LV1210-G0.5L	Amber Glass	0.5 Litre
LV1210-G1L	Amber Glass	1 Litre

Cat No.	Package	Size
LV1210-G2.5L	Amber Glass	2.5 Litre
LV1210-G4L	Amber Glass	4 Litre

Office

24 Rama 1 Road,
Rongmuang,
Pathumwan, Bangkok
10330 Thailand

+66 2613 7911-4

+66 2613 7600-5

+66 2613 7600-5

sales@rcilabscan.com

www.rcilabscan.com

